

24 WEATHER SQUADRON



MISSION

LINEAGE¹

24 Weather Squadron constituted, 28 Oct 1943

Activated, 1 Nov 1943

Disbanded, 7 Sep 1944

Reconstituted, 18 May 1948

Activated, 1 Jun 1948

Inactivated, 18 Nov 1957

Activated, 28 Feb 1961

Organized, 8 Jul 1961

STATIONS

Great Falls, MT, 1 Nov 1943-27 Nov 1943

Seattle, Washington, 27 Nov 1943

Kelly AFB, TX, 1 Jun 1948-20 Nov 1948

Brooks AFB, TX, 20 Nov 1948-24 Oct 1950

Kelly AFB, TX, 24 Oct 1950-16 May 1952

Randolph AFB, TX, 16 May 1952-18 Nov 1957

Randolph AFB, TX, 8 Jul 1961

ASSIGNMENTS

¹ Air Force Historical Research Agency. U.S. Air Force. Maxwell AFB, AL.

Unit yearbook, *Randolph AFB, TX, 1955*, Army and Navy Publishing Co. Inc., Baton Rouge, LA, 1955.

Army Air Forces Weather Wing, 1 Nov 1943
103 Weather (later, 2103 Air Weather Group), 1 Jun 1943
2059 Air Weather Wing, 24 Oct 1950
8 Weather Group, 20 May 1952
8 Weather Group, 8 Jul 1961
7 Weather Wing, 8 Oct 1965
3 Weather Wing, 30 Jun 1972
5 Weather Wing, 1 Jan 1976
3 Weather Wing, 1 Apr 1980

COMMANDERS

Capt Bernard Puin, 1 Nov 1943
Maj Louis D. Laurin, 1 Jun 1948
Lt Col Lawrence A. Atwell, 24 Oct 1950
Maj Griffin H. Wood, 23 Jan 1951 (temporary)
Lt Col Rufus G. Bounds, 5 Feb 1951
Maj Griffin H. Wood, 23 Feb 1951
Maj Wilfred M. Martin, Sr., 7 May 1951 (temporary)
Lt Col August W. Throgmorton, 10 Aug 1951
Lt Col Robert B. Hughes, 22 Aug 1954
Lt Col Nicholas J. Gavare, 23 Jun 1956
Col John C. Scales, 8 Jul 1961
Col Carl E. Wagner, 15 Aug 1962
Lt Col Morris H. Newhouse, 1 Aug 1965
Col Nicholas J. Gavares, 20 Aug 1965
Col Arthur Yorra, 1 Jul 1966
Col LeRoy P. Brunner, 28 Aug 1968
Col William C. Anderson, 24 Jun 1970
Col Eugene C. St. Clair, 4 Jun 1973
Col Loren L. Lorenzen, 1 Sep 1975
Col Donald E. Smith, 26 Jun 1980
Col Arthur L. Boright, 29 Jul 1983
Col John P. Upchurch, 12 Jun 1986

HONORS

Service Streamers

Campaign Streamers

Armed Forces Expeditionary Streamers

Decorations

Air Force Outstanding Unit Award
1 Apr 1978—31 Mar 1980

EMBLEM



First emblem: The chief points are mountains in the background, barren terrain, and sudden closing in of the weather. The character of the little Indian is typical of the region in which the 24th is located, and he is used as observer-forecaster. The broad grin and snap of the fingers shows that he considers a forecast a "cinch." However, it is obvious that he is only considering the fair weather cumulus. Just behind him is a terrific system on the point of closing in the station and mauling him in the bargain. The sun is laughing at the ironic humor of the situation, having seen this happen many times before in this western section. The little cumulus is departing in a hurry. Hence, the features in the design are typical of this weather region in particular—the mountains, the "obvious" but "wrong" forecast teased on present weather, and the sudden appearance of bad weather from the blue. (Approved, 1 Nov 1944)

Second emblem: The blue background depicts the sky, the primary theater of Air Force operations, with the two shades of blue indicating the unit's night and day operation. The bolts allude to the speed at which weather conditions change. The six stars, two and four, represent the squadron's numerical designation, and also denote that weather support is a 24-hour-a-day job. The anemometer symbolizes the integral role which the squadron plays in Air Weather Service. The emblem Force colors of golden yellow and ultramarine blue. (Approved, 16 Sep 1968)

MOTTO

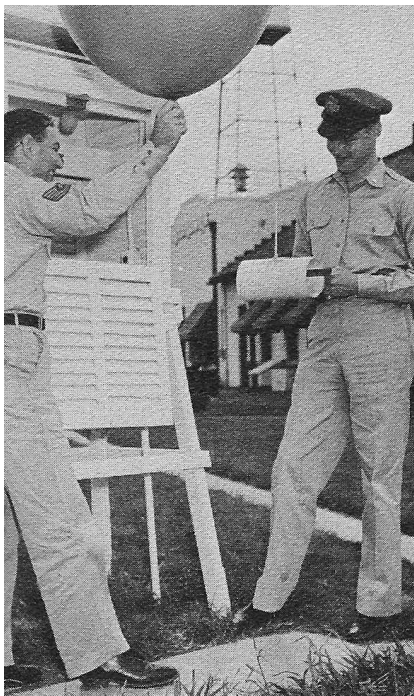
OPERATIONS

Det 1, Randolph AFB, TX
Det 2, Columbus AFB, MS
Det 7, Mather AFB, CA
Det 9, Maxwell AFB, AL
Det 11, Reese AFB, TX
Det 12, Sheppard AFB, TX
Det 15, Vance AFB, OK

Det 17, Williams AFB, AZ
Det 20, Laughlin AFB, TX
Det 22, Keesler AFB, MS



Lt Col Robert B. Hughes, commander talks with Lt Col Seabolt.



24 Weather Squadron NCO and Lieutenant recording temperature and releasing a balloon to check ceiling height.